

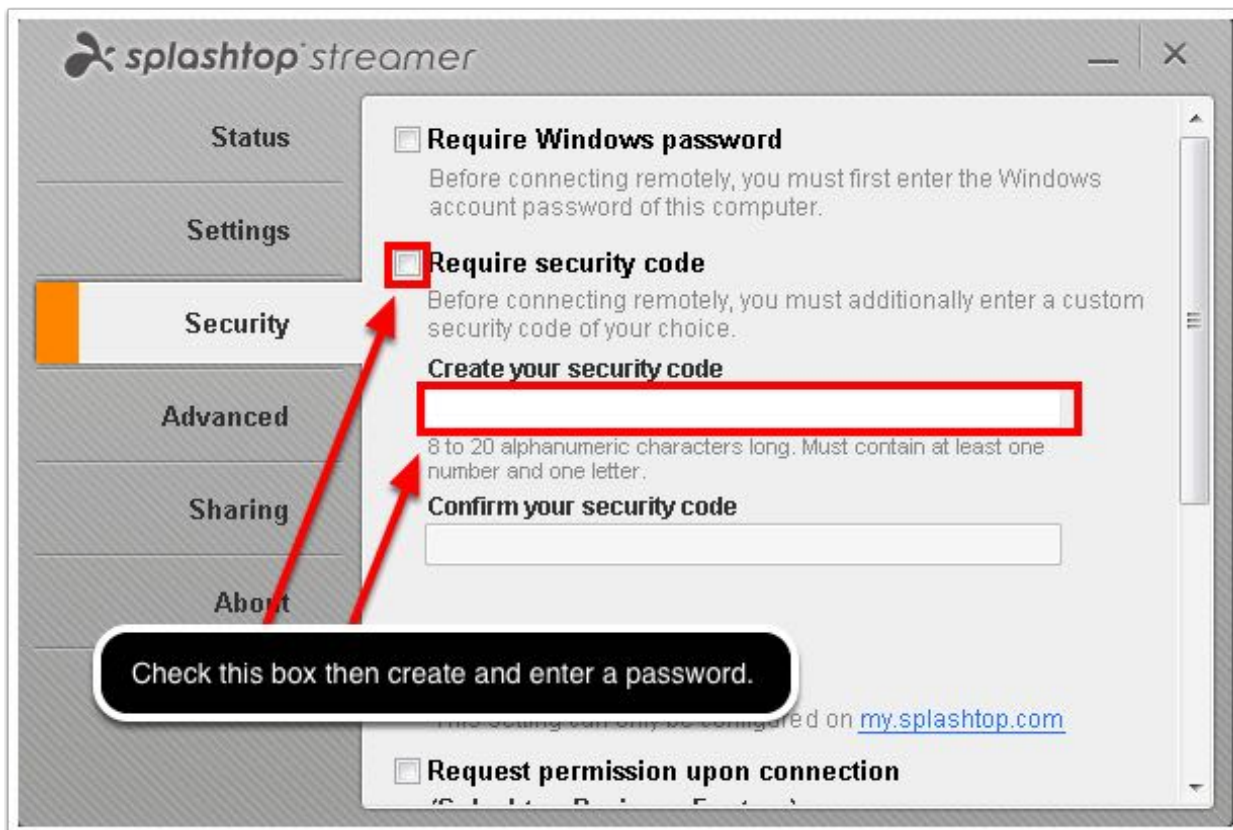
How to use your iPad like a SmartBoard™

If your classroom computer is connected to a projector but you only have a whiteboard, you can use an iPad like a SmartBoard™ instead. You can use your iPad to view and control your computer as well as annotate what's on-screen. By no longer being tethered to the front of your classroom, you're free to move around, monitor your students, answer questions and provide on-to-one support. Different solutions are available to accomplish this, but the following instructions specifically reference two programs: [Splashtop Streamer](#) (free for Mac/PC) and [Splashtop Whiteboard](#) (currently \$34.99 in iTunes).

Please note that although this software can be used on a wired desktop PC, it is highly recommended that your computer have wireless capabilities. You can add WiFi using a USB wireless adapter like the [Linksys AE1200](#).

1. Install Splashtop Streamer

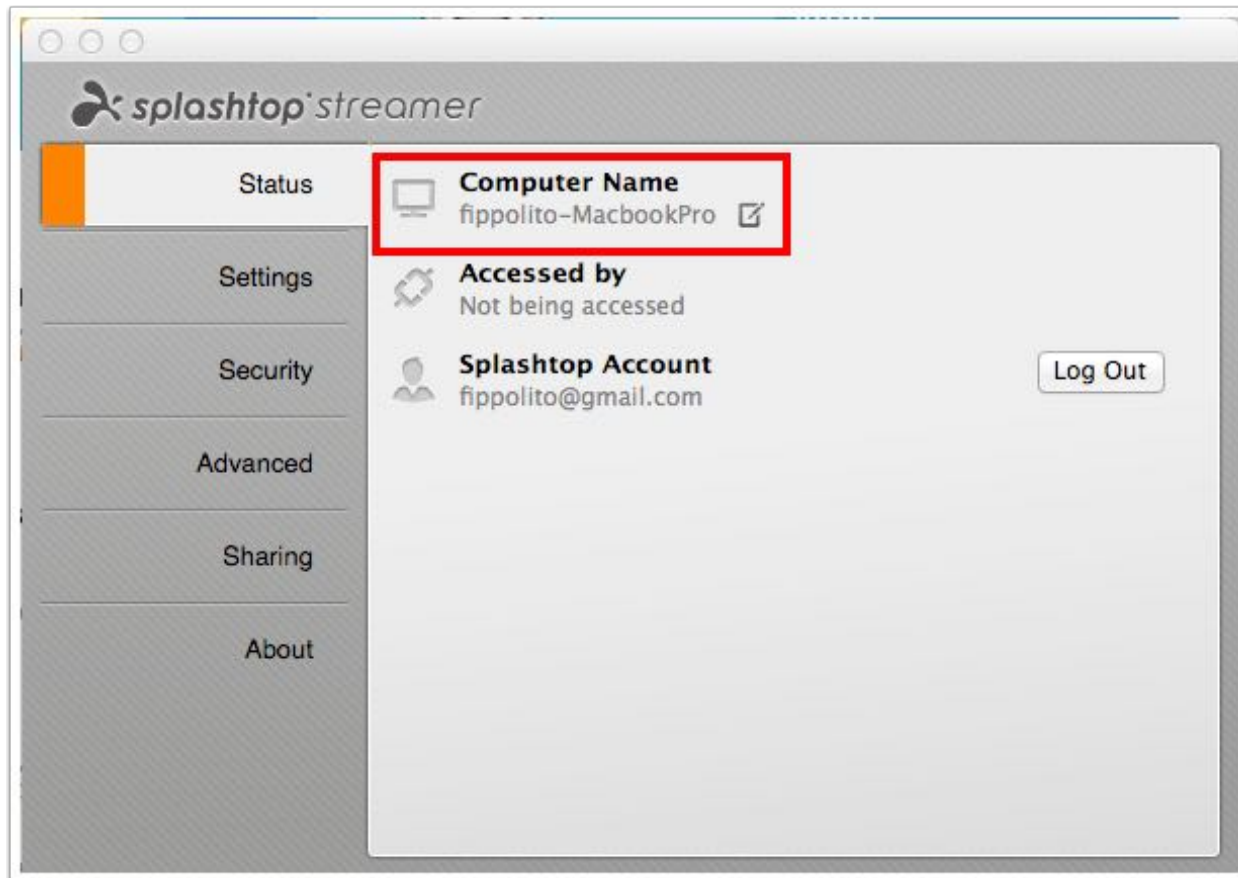
[Download](#) and install Splashtop Streamer. After installation, be sure to check off the **Require Windows (or Mac) password** and/or **Require security code** so that no one else can control your computer.



How to use your iPad like a SmartBoard™

2. Computer Name

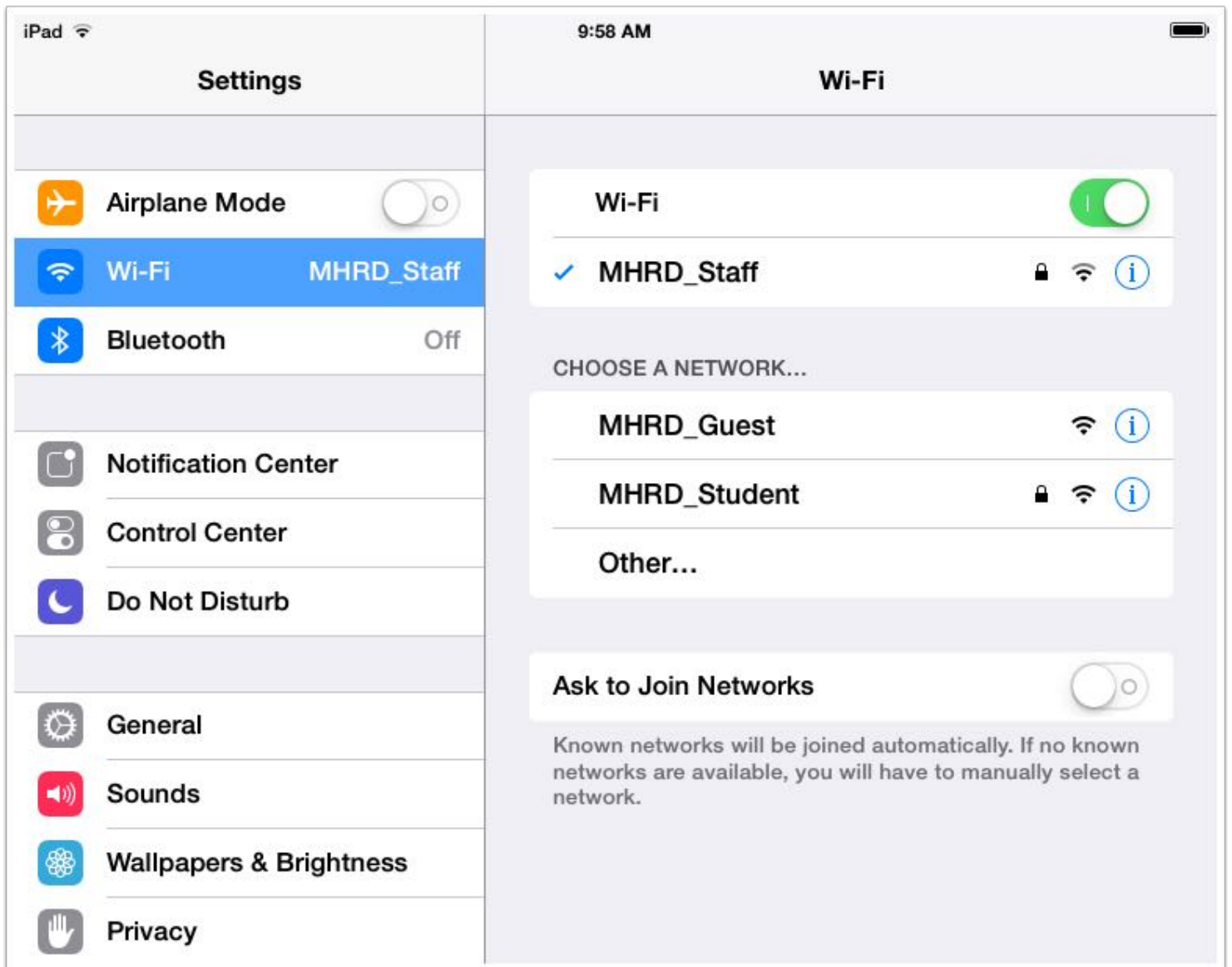
On the Splashtop Streamer Status tab, please note the name of your computer.



How to use your iPad like a SmartBoard™

3. Confirm Wi-Fi Network

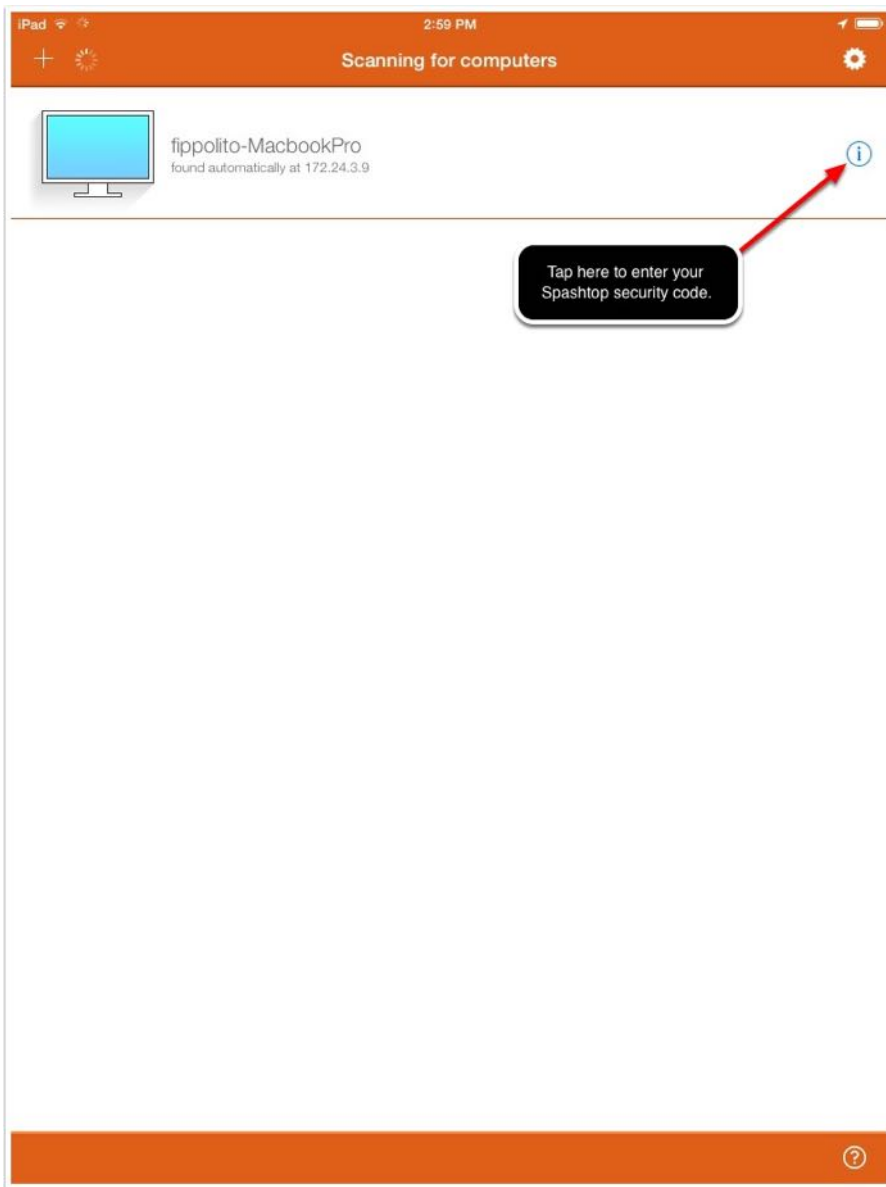
Confirm that the iPad and the computer are on the same wireless network. On the iPad go to **Settings > Wi-Fi** (shown). On Windows 7, click on the WiFi icon in the System Tray. On a Mac, go to **System Preferences > Network > Wi-Fi**.



How to use your iPad like a SmartBoard™

4. Open the Whiteboard App

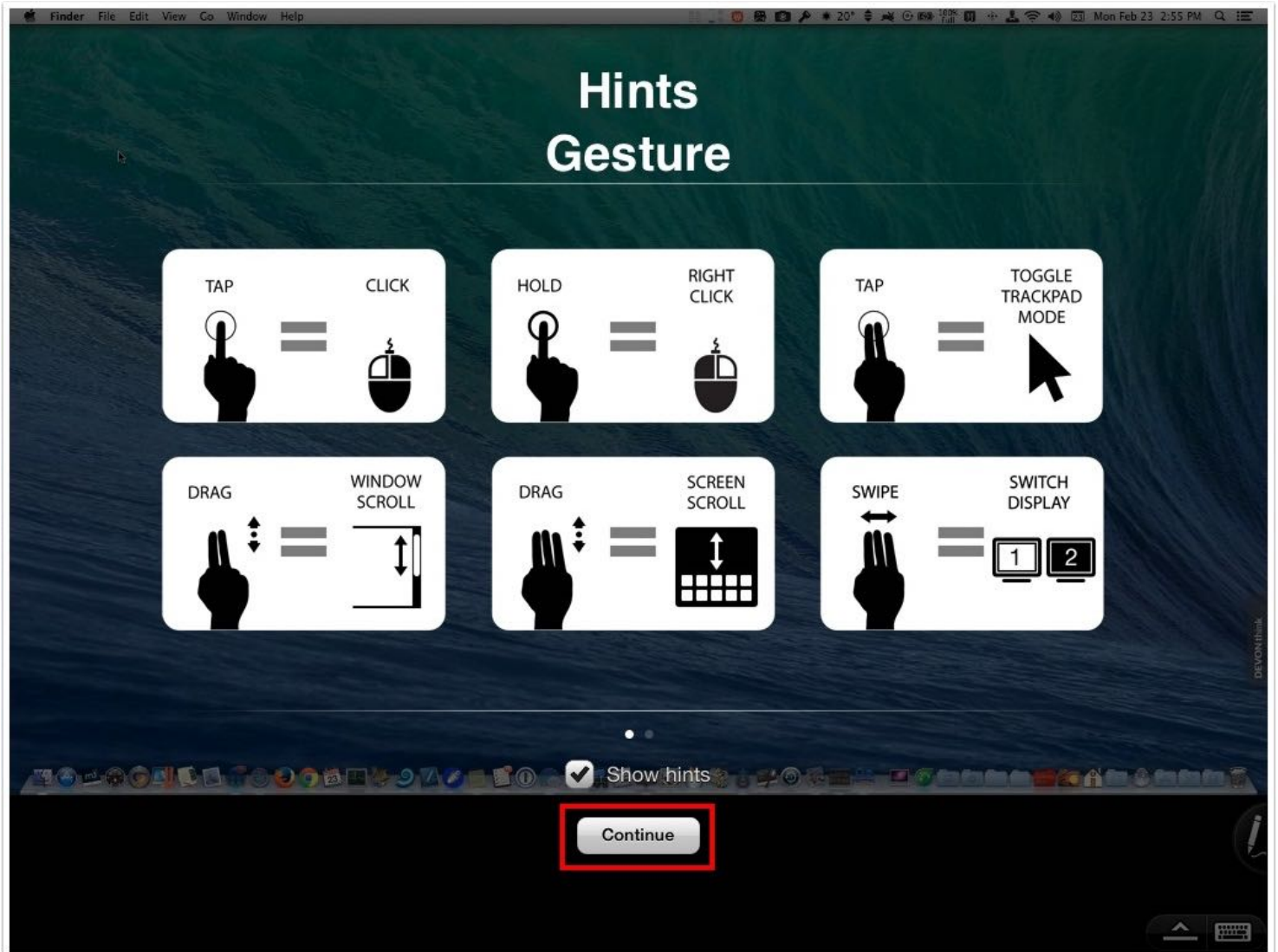
On your iPad, open the Splashtop Whiteboard App. Your computer should automatically be detected and appear on the screen. Tap on the (i) symbol and enter the security code you created for your computer in Step 1, then tap **Save**. Finally, tap on your computer to connect to it.



How to use your iPad like a SmartBoard™

5. Gestures

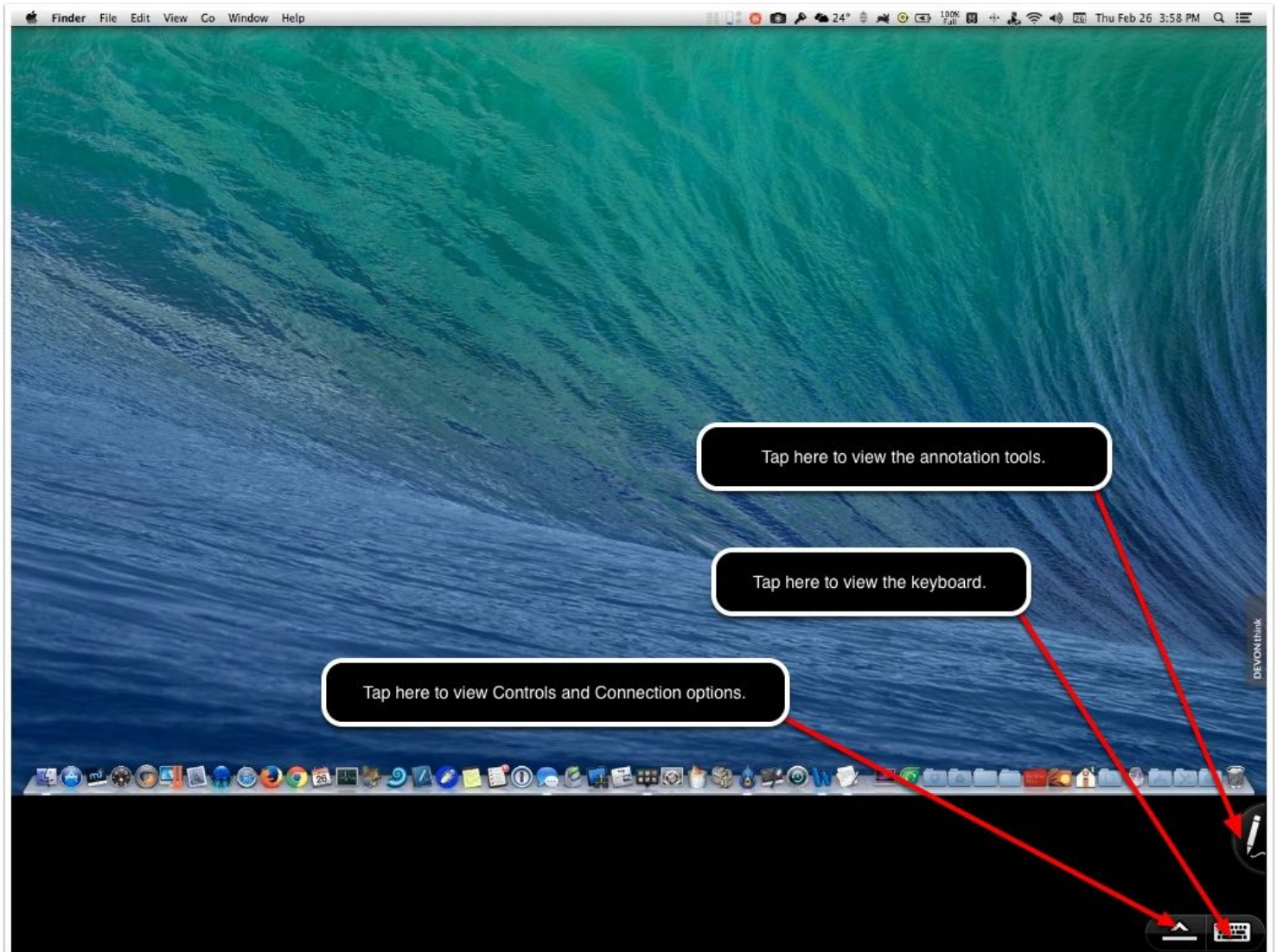
A screen will appear showing the various finger gestures you'll need to use to emulate mouse clicking and scrolling. Tap **Continue** when you're ready.



How to use your iPad like a SmartBoard™

6. Tools and Controls

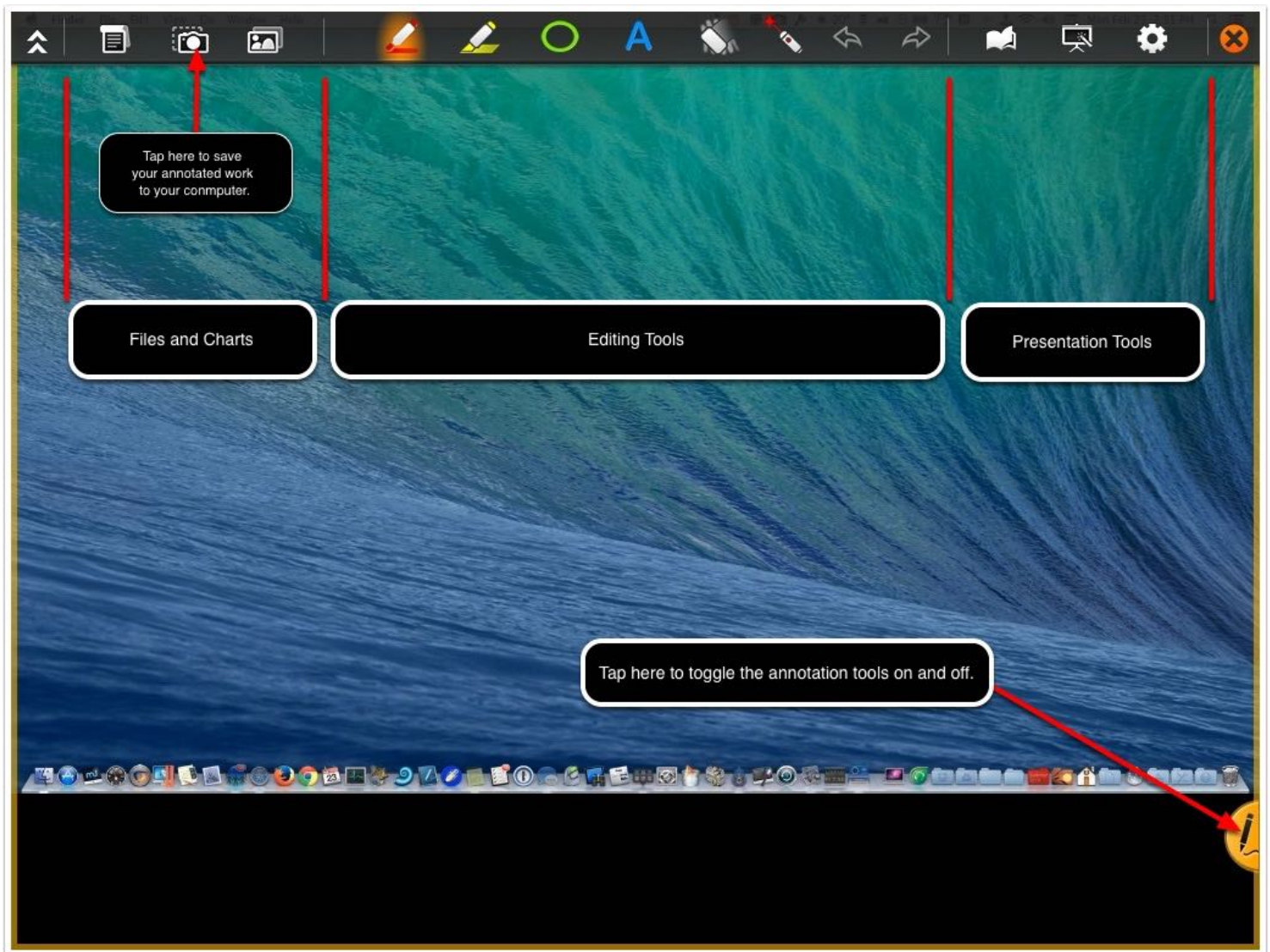
Tap on the pen icon near the lower-right side of your iPad screen to show the annotation tools. Tap the keyboard icon to pull up a full size keyboard. Tap on the up-arrow icon to view other controls and connections options.



How to use your iPad like a SmartBoard™

7. Tools

The tools are divided into three sections: **Files and Charts**, **Editing Tools** and **Presentation Tools**. Experiment with each of them to see how they work. To save your annotated work, tap on the **Camera icon**. Tap on the **Pen icon** again to hide the tools.



How to use your iPad like a SmartBoard™

8. Control and Connection Options

The **Controls and Connections toolbar** allow you to show hints, make the image sharper or smoother and lock the screen orientation. See the image below to see what all of the tools are for. When you're ready to end the connection between your iPad and computer, tap on the **Disconnect** icon.

